

Accomplishments & Activities

The Twin/Walker Creeks Watershed Conservancy is a 501 c 3 non-profit organization. The Conservancy, organized under a Pennsylvania Department of Environmental Protection Growing Greener Grant in 2000, was the first citizen-based watershed organization within the county.

The Conservancy has accomplished several milestones in achieving its mission including: legal incorporation, IRS non-profit status, a study design for our water quality monitoring program, a set of training modules for volunteer monitors, an on-going watershed newsletter, educational programs, water quality monitoring program, a watershed assessment for our watershed and the recipient of a **2004 Northeastern PA Environmental Partnership Award**.



The Conservancy is committed to conservation and stewardship of our watershed and has devoted many volunteer hours and significant financial resources of our own in this effort. The Conservancy has received the financial support of 20% of our residents as well as the two major landowner associations through yearly contributions. In addition, the Walker Lake Landowners Association has donated laboratory and meeting facility for our Board and public meetings at their clubhouse. The local community has recognized the Conservancy as an important resource for both education and watershed science largely due to the time and

effort contributed by the Conservancy Board and other volunteers.

Finally, the Conservancy has a website - **Www.twcwc.com**. We encourage you to visit our website to get additional information on the Conservancy.



What Can You Do to Help?

TWCWC needs your help and you don't need to be an expert. All you need is concern for the environment.

As an integral part of the watershed you live in, what you do in your backyard and in your lifestyle makes a difference. We encourage you to know your watershed and learn about the land uses which can adversely affect our watershed.

Volunteers are also needed to ensure our success. Various ways you can help:

- Become a member
- Come to meetings
- Donate your experience
- Volunteer for projects including water quality monitoring
- Make a donation

Your contribution will help improve the environment, which will subsequently enhance the quality of life within the Twin/Walker Creeks Watershed.



Twin/Walker Creeks Watershed Conservancy (TWCWC)

WAS ESTABLISHED IN 2000
& INCORPORATED IN 2001

The mission of the Twin/Walker Creeks Watershed Conservancy is to promote a better understanding of the Twin and Walker Creeks Watershed and its ecosystems and to protect, restore and enhance the watershed through proper management and watershed stewardship.

WWW.TWCWC.COM

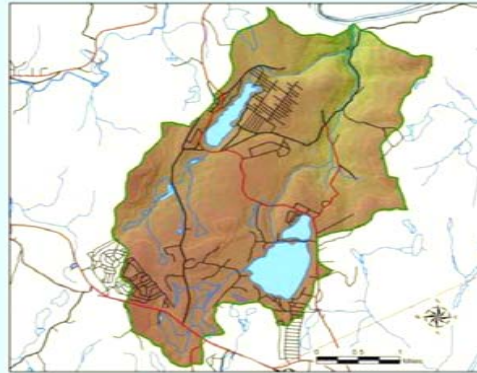
Twin/Walker Creeks Watershed

Twin/Walker Creeks Watershed is 11.5 square miles in area located in Shohola and Dingman Townships, Pike County. Most of the watershed consists of heavily-forested glacial ridges and valleys, with concentrated residential development existing along the shores of the three major lakes in the watershed - Walker Lake, Big Twin Lake and Little Twin Lake. The Twin/Walker Creeks Watershed contains more than 11 miles of streams including highly-sloped intermittent headwater drainages, gently-sloping streams that travel through wetland complexes and steep, cobble-bottomed, perennial streams. The watershed consists primarily of natural vegetation including deciduous forests (70.7%), forested wetlands (6.6%), evergreen forests (4.2%) and lakes and streams (6.5%) with significant areas of urban and residential development (12%) around Walker Lake, Little Twin Lake and Big Twin Lake and along Route 6 in the southwest area of the watershed.

History

The Twin/Walker Creeks Watershed was sparsely inhabited until the 1880's and 90's, when the area became a popular tourist destination for New York City dwellers via the New York & Erie railroad. During this time, the railroad brought supplies, visitors and mail to the area and provided a means to export goods including bluestone mined from local quarries. By 1900, much of the quarrying and tourist industry dried up, leaving the area to relative obscurity until the 1960's when developers began to build vacation and retirement homes. This trend has continued in recent decades with population growth nearly doubling in Shohola Township over the last 20 years.

Twin Lakes & Walker Lake Creek Watershed



Grants

- ◆ TWCWC was organized with the assistance of a Pennsylvania Department of Environmental Protection Growing Greener Grant .
- ◆ TWCWC completed a watershed assessment study with the assistance of a Pennsylvania Department of Environmental Protection Growing Greener Grant.
- ◆ TWCWC received a Canaan Valley Institute grant to identify and map septic systems within the Twin/Walker Creeks Watershed and conduct an educational outreach program for homeowners.
- ◆ TWCWC received a Stream Signage Grant from the Pocono Northeast Resource Conservation & Development Council to place highway signs on Twin Lakes Road for Twin Lakes & Walker Lake Creeks.
- ◆ TWCWC continues to apply for grant funds to reduce non-point pollution of our surface and ground water at sites identified in the assessment study .

Conservancy Membership Application

I am concerned with the future quality and quantity of the water resources in our neighborhood and would like to support the conservation efforts of the Twin/Walker Creeks Watershed Conservancy through membership

Name _____

Mailing Address _____

Phone _____ E-mail _____

Check type of membership

Senior/Student \$5.00

Individual \$10.00

Family \$15.00

Corporate/Business \$50.00

In support of the watershed conservation

efforts, I would like to provide an additional gift in the amount of _____

Total Enclosed _____

I may be interested in assisting with the volunteer monitoring efforts.

Please make checks payable to:

**Twin/Walker Creeks Watershed
Conservancy & mail to:**

Twin/Walker Creeks Watershed Conservancy
100 Walker Lake Road
Shohola, PA 18458